

# NORTH ZONE PLAN VIEW

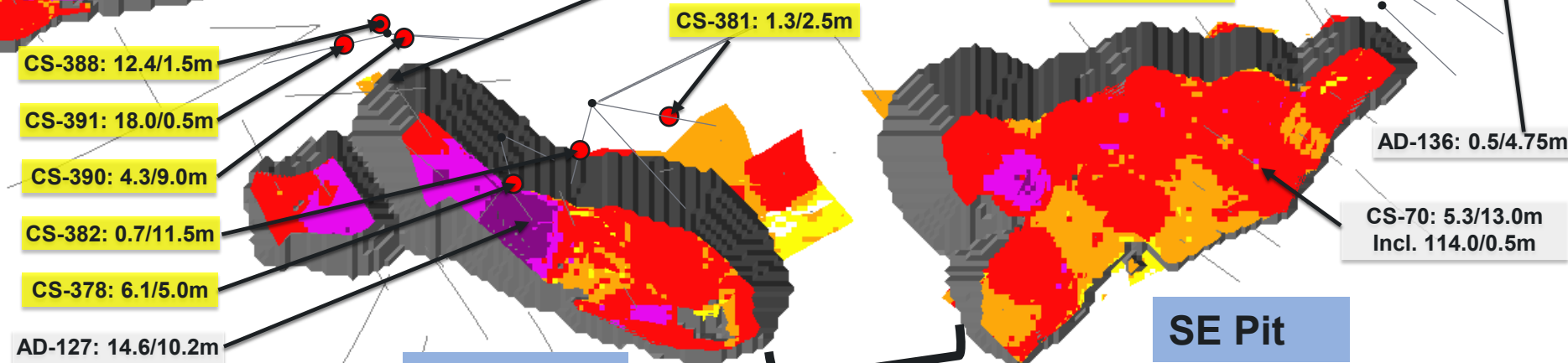
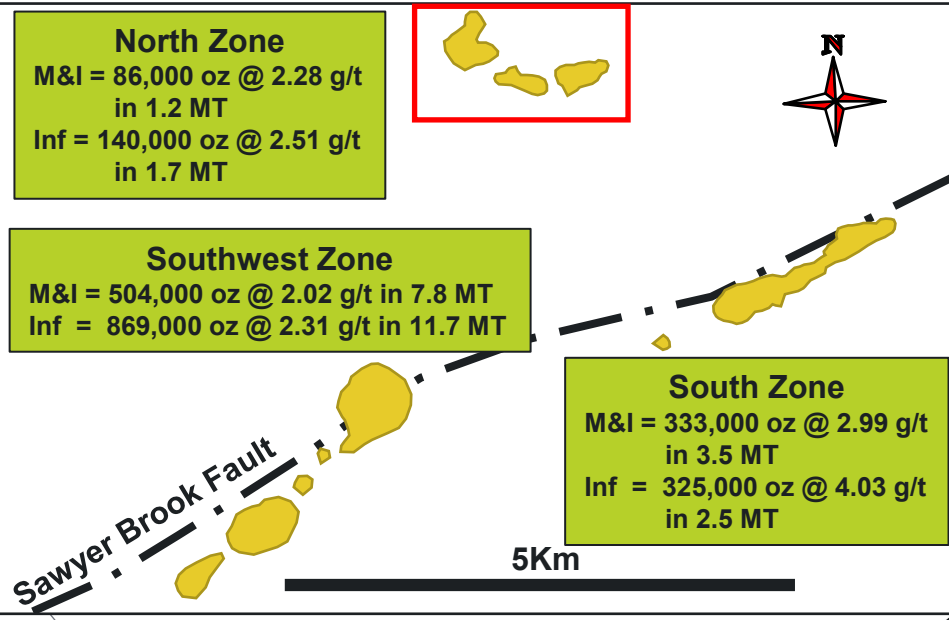
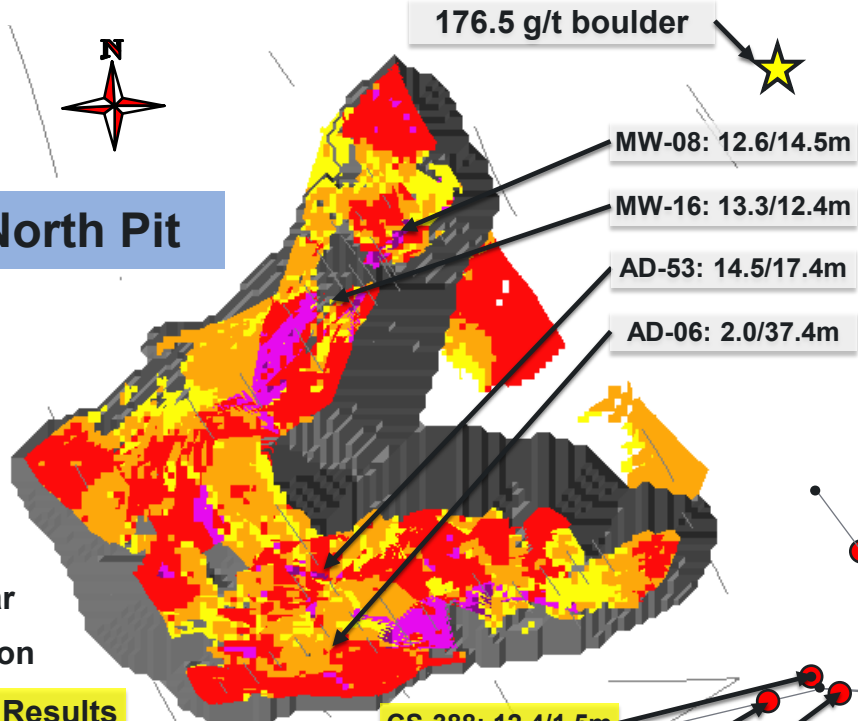


- New Drill Collar
- New Intersection
- Hole #: New Drill Results
- Hole #: Previous Results

**NORTH ZONE RESOURCE**  
**100% PIT CONSTRAINED**

M&I: 1.2MT @ 2.28 g/t Au  
 = 86,000 oz + Sb

Inf: 1.7MT @ 2.51 g/t Au  
 = 140,000 oz + Sb



**Middle Pit**

Plan View  
 Cutoff Grade: 0.38 g/t Au

**Gap Not Yet Drilled**

