

CL-85
1.0 / 17.5

CL-44A
3.3 / 16.85
plus 0.9 / 21.3

CL-36
13.0 / 8.7

CL-41
2.4 / 3.6
(8.2 / 0.5)

CL-25
0.9 / 20.3

CL-23
0.8 / 12.6

CL-15
0.7 / 48.75

CL-40
1.1 / 9.8
plus 1.2 / 3.7

CL-28
2.9 / 5.1
(7.1 / 1.3)

CL-56
3.6 / 17.0
(15.6 / 3.0)

CL-59
4.5 / 8.45

CL-27
3.4 / 17
(24.3 / 1.0 V.G.)
(40.0 / 0.5 V.G.)

CL-24
0.6 / 19.9

CL-04
2.2 / 11.9

CL-54
1.1 / 25.5

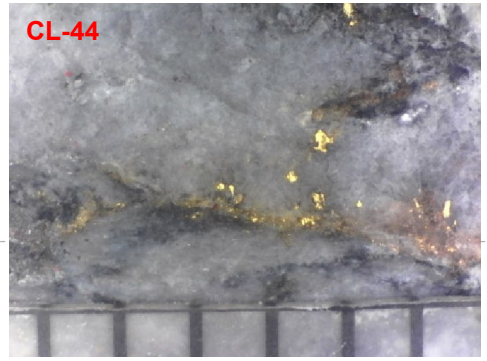
CL-39
2.1 / 4.5
(10.5 / 0.5 V.G.)

CL-26
241.5 / 4.2

CL-97
2.0 / 54.0

Legend

- Planned DDH
- Significant Intersection
- Partial/Pending Assay
- Mineralized Vein



* Text in boxes: 10.6 / 47.0 means 10.6 grams per tonne (g/t) gold over 47.0 meters (m)
** () = INCLUDING