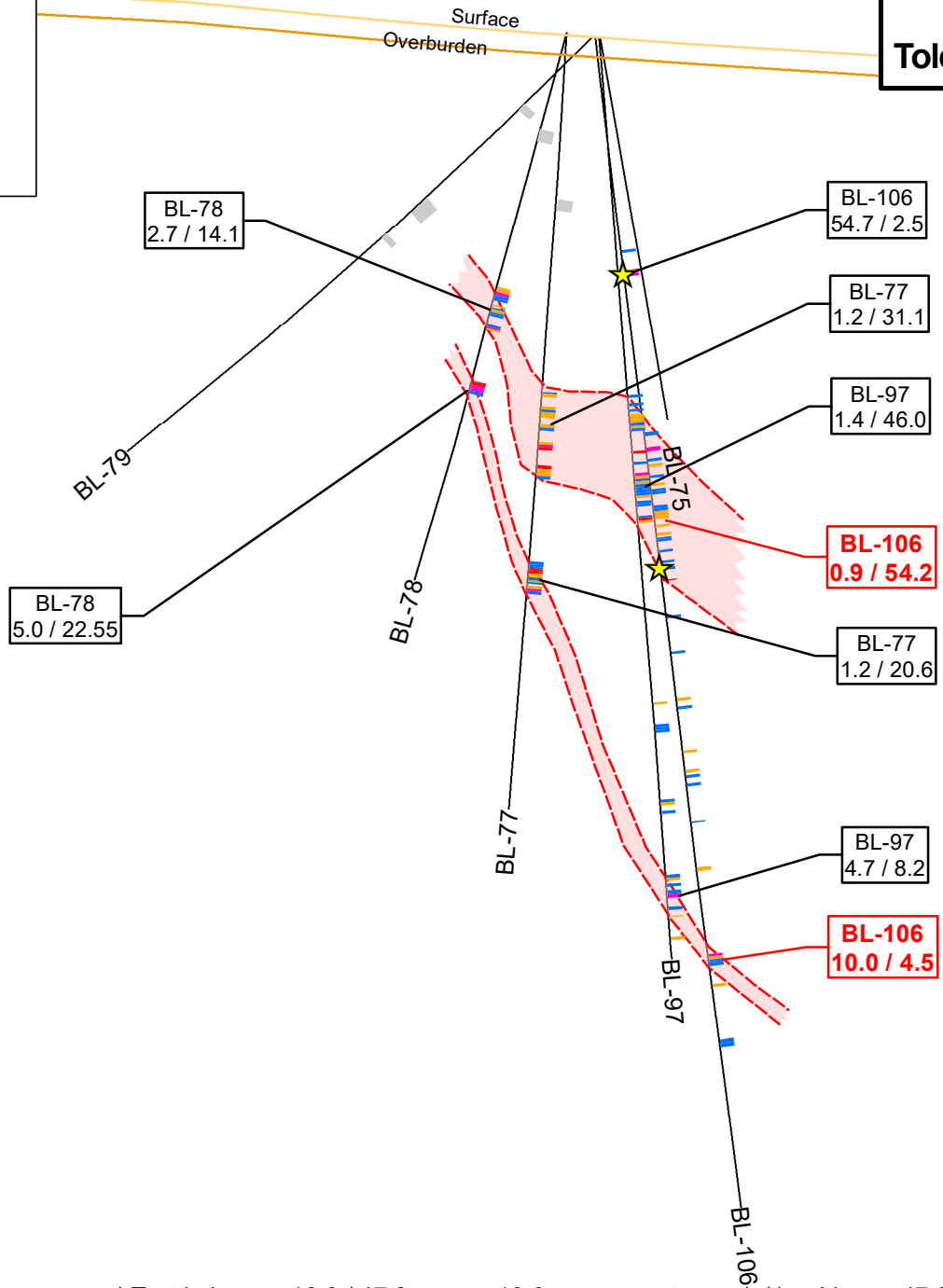


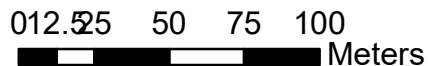


**Section C of Richard Zone
Looking at N40E
Tolerance: 50m each side, 100m total**



Legend

- ★ VG
- Au (g/t)**
- < 0.4
- 0.5 - 1.0
- 1.1 - 3.0
- 3.1 - 6.0
- > 6.0
- Pending
- Mineralized Zone
- Surface
- Overburden



* Text in boxes: 10.6 / 47.0 means 10.6 grams per tonne (g/t) gold over 47.0 meters (m)
** () = INCLUDING